



**BUREAU  
VERITAS**

# TEST REPORT

LAB NO. : (6614)358-0974  
DATE : January 14, 2015  
PAGE : 1 OF 13

**APPLICANT** : WONDERLAND SPORT LIMITED  
NO.4, JIUXIANQIAO ROAD, CHAOYANG DISTRICT, BEIJING, CHINA

**DATE OF SUBMISSION** : December 24, 2014

**DATE OF ON HOLD** : December 30, 2014

**DATE OF OFF HOLD** : January 13, 2015

**TEST PERIOD** : December 24, 2014 to January 14, 2015

**NO. OF WORKING DAY(S)** : 7

**SAMPLE DESCRIPTION** : Received samples stated to be  
Frame tent and power tent; Oxford fabric; Blue and green  
Country of Origin: CHINA  
Manufacturer name: WONDERLAND SPORT LIMITED  
Client Specified Age Grade: OVER 3 YEARS OF AGE  
Tested Age Grade: OVER 3 YEARS OF AGE

## SUMMARY OF TEST RESULTS

TEST REQUESTED	CONCLUSION	REMARK
The mechanical and physical properties requirements of the tested subclauses of the European Standard, "Safety of toys", EN71: Part 1: 2014 clauses 1-6 without washing.	PASS	-
The flammability requirements of the European Standard "Safety of Toys", EN 71: Part 2: 2011+ A1: 2014, without washing.	PASS	-
Migration of Certain Elements – EN71-3: 2013	-	See Result
Total Cadmium Content – Regulation (EC) No. 1907/2006 Annex XVII Item No. 23	-	See Result
Phthalate Test	-	See Result
Solar UV Protective Properties – Reference to EN 13758-1:2001+A1:2006	-	See Result
Water Penetration: Hydrostatic Pressure Test	-	See Result

### Note:

- The sample is tested for "OVER 3 YEARS OF AGE" as the client's request.
- No relevant packaging was provided with the submitted sample(s), consequently, evaluation of the labeling requirements of this European Standard, "Safety of toys", EN 71: Part 1: 2011, incorporating amendment A3: 2014 Clause 7, was not conducted.

### REMARK

If there are questions or concerns on this report, please contact the following persons:

General enquiry and invoicing

Ms. Lucy Xu/ Sally Wang

(021) 24166888\*6842/6831

Lucy.xu@cn.bureauveritas.com/ Sally.wang@cn.bureauveritas.com

Technical enquiry

Mr. Gorden.Yu/ Ms. Joyce Huang

(021) 24166888\*6852/6860

Gorden.Yu@cn.bureauveritas.com/ Joyce.huang@cn.bureauveritas.com

**BUREAU VERITAS**

**CONSUMER PRODUCTS SERVICES DIVISION (SHANGHAI)**

PREPARED BY : Eunice

Gorden Yu  
Analytical Lab

RW/2015

**Photo of the Submitted Sample**





LAB NO. : (6614)358-0974  
DATE : January 14, 2015  
PAGE : 3 OF 13

**Photo of the Submitted Sample**





LAB NO. : (6614)358-0974  
DATE : January 14, 2015  
PAGE : 4 OF 13

### TEST RESULT

#### APPROPRIATE AGE GRADE DETERMINATION

The Appropriate Age Grade is determined with reference to the EN71: Part 1: 2005, CR 14379:2002 "Classification of toys-Guidelines" prepared by Technical Committee CEN TC 52 and Age Grade Determination Guidelines of the Consumer Product Safety Commission (CPSC).

Note: If the client does not specify an age grade for testing or request BVCPS to determine an appropriate age grade, the labeled age grade will be used for testing.

#### EXPLANATION OF THE ABBREVIATIONS FOR PART 1. 2

Symbol	Explanation				
NM	The samples are NOT IN COMPLIANCE WITH the requirement of this Subclause				
M	The samples are IN COMPLIANCE WITH the requirement of this Subclause				
N/A	Not Applicable				
NR	Not Requested				
NE	Not Evaluated				
NP	None Present				
P	Present				
R	Refer to Comment Section of this report				
Symbol	Language Present	Symbol	Language Present	Symbol	Language Present
B	Belgian language	G	German language	PR	Portuguese language
D	Danish language	GR	Greek language	S	Spanish language
E	English language	H	Dutch language	SD	Swedish language
F	Finnish language	I	Italian language	SZ	Swiss language
FR	French language	N	Norwegian language		



LAB NO. : (6614)358-0974  
DATE : January 14, 2015  
PAGE : 5 OF 13

### TEST RESULT

**I. The mechanical and physical properties requirements of the tested subclauses of the European Standard, "Safety of toys", EN71: Part 1: 2014 clauses 1-6 without washing.**

#### **MECHANICAL & PHYSICAL PROPERTIES (EN 71: PART 1 –2014)**

Subclause	Requirement	Result
4.1	Material cleanliness	M
4.2	Assembly	N/A
4.3	Flexible plastic sheeting	N/A
4.4	Toy Bags	N/A
4.5	Glass	N/A
4.6	Expanding materials	N/A
4.7 & 7.6	Edges	M
4.8 & 7.6	Points and metallic wires	M
4.8e	Splinters	M
4.9	Protruding parts	N/A
4.10.1	Folding and sliding mechanisms	N/A
4.10.2	Driving mechanisms	N/A
4.10.3	Hinges	N/A
4.10.4	Springs	N/A
4.11	Mouth actuated toys and other toys intended to be put in the mouth	N/A
4.12 & 7.3	Balloons	N/A
4.13 & 7.9	Cord of toy kites and other flying toys	N/A
4.14.1	Toys which a child can enter	N/A
4.14.2 & 7.8	Masks and helmets	N/A
4.15.1	Toys propelled by child	
4.15.1.2 & 7.10.1 & 7.10.2 & 7.10.3 & 7.10.4 & 7.16	Toys propelled by child – Instructions for use	N/A
4.15.1.3	Toys propelled by child – Strength	N/A
4.15.1.4	Toys propelled by child – Stability	N/A
4.15.1.5	Toys propelled by child – Braking	N/A
4.15.1.6	Toys propelled by child - Transmission	N/A
4.15.1.7	Toys propelled by child – insertion mark	N/A
4.15.1.8	Electrically-driven ride-on toys	N/A
4.15.2	Toy bicycles	
4.15.2.2 & 7.15	Toy bicycles – Warnings and instructions for use	N/A
4.15.2.3	Toy bicycles – Braking	N/A
4.15.3 & 7.16 & 7.19	Rocking horses and similar toys	N/A
4.15.4 & 7.16	Toys not propelled by child	N/A
4.15.5 & 7.18	Toy scooters	N/A
4.16	Heavy immobile toys	N/A
4.17.1	Projectiles – General	N/A
4.17.2	Projectiles toys without stored energy	N/A
4.17.3 & 7.7	Projectile toys with stored energy	N/A



LAB NO. : (6614)358-0974  
 DATE : January 14, 2015  
 PAGE : 6 OF 13

### TEST RESULT

**I. The mechanical and physical properties requirements of the tested subclauses of the European Standard, "Safety of toys", EN71: Part 1: 2014 clauses 1-6 without washing.**

#### **MECHANICAL & PHYSICAL PROPERTIES (EN 71: PART 1 –2014)**

Subclause	Requirement	Result
4.17.4 & 7.7	Bows and arrows	N/A
4.18 & 7.4	Aquatic toys and inflatable toys	N/A
4.19 & 7.13 & 7.14	Percussion caps	N/A
4.20.2.1- 4.20.2.8, 4.20.2.10, 4.20.2.12	Acoustics	N/A
4.20.2.9, 4.20.2.11 & 7.14	Acoustics – percussion toys & cap-firing toys	N/A
4.21	Toys containing a non-electrical heat source	N/A
4.22 & 7.2	Small balls	N/A
4.23	Magnet	
4.23.2 a, b & c	Toy other than magnetic / electrical experimental sets intended for children over 8 years	N/A
4.23.3 & 7.20	Magnetic / electrical experimental sets intended for children over 8 years	N/A
4.24	Yo-yo ball	N/A
4.25	Toys attached to food	N/A
<b>FOR TOYS INTENDED FOR CHILDREN UNDER 36 MONTHS</b>		
5	Cleaning instruction for item intended for child under 3 years of age	N/A
5.1	General	N/A
5.1a	Small parts – as received	N/A
5.1b	Small parts, sharp points, sharp edges – after tests	N/A
5.1c	Cross section <2mm metal points & wires	N/A
5.1e	Toys contain glue	N/A
5.1f	Casing of toys	N/A
5.2	Filings, coverings and seams	N/A
5.3	Adhesion of plastic sheeting	N/A
5.4 &	Cords on toys	N/A
5.4(a)	Cords connected to self-retraction mechanism or in pull along toys	N/A
5.4(b) & 7.22	Cords and chains that can form tangled loop or noose	N/A
5.4(c) & 7.22	Fixed loop of cords or chains	N/A
5.4(d)	Nooses	N/A
5.4(e)	Self-retraction mechanism	N/A
5.4(f) & 7.11	Toy across cradle, cot or perambulator	N/A
5.4(g) & 7.22	Cords and chains with free end (exclude pull along toy)	N/A
5.4(h)	Cords and chains with free end on pull along toy	N/A
5.4(i) & 7.21	Electrical cables	N/A
5.5 & 7.12	Liquid filled toys	N/A
5.6	Electrically driven toys	N/A
5.7	Glass and porcelain	N/A
5.8	Shape and size	N/A
5.9 & 7.17	Monofilament fibres	N/A



LAB NO. : (6614)358-0974  
DATE : January 14, 2015  
PAGE : 7 OF 13

### TEST RESULT

**I. The mechanical and physical properties requirements of the tested subclauses of the European Standard, "Safety of toys", EN71: Part 1: 2014 clauses 1-6 without washing.**

#### **MECHANICAL & PHYSICAL PROPERTIES (EN 71: PART 1 –2014)**

Subclause	Requirement	Result
5.10	Small balls	N/A
5.11	Play figures	N/A
5.12	Hemispheric shaped toys	N/A
5.13	Suction cups	N/A
5.14	Straps intended to be worn fully or partially around the neck	N/A
6	Packaging	N/A
<b>WARNINGS, INSTRUCTIONS FOR USE</b>		
7	CE Mark	SEE NOTE 2
7	Manufacturer name and address	SEE NOTE 2
7	Importer name and address	SEE NOTE 2
7	Product Identification	SEE NOTE 2
7.1	General	SEE NOTE 2
7.2	Toys not intended for children under 36 months	SEE NOTE 2
7.5	Functional toys	SEE NOTE 2





LAB NO. : (6614)358-0974  
 DATE : January 14, 2015  
 PAGE : 8 OF 13

REQUIREMENTS & TEST METHODS CROSS REFERENCE TABLE FOR PART 1

Sub-clause	Test Method	Sub-clause	Test Method	Sub-clause	Test Method	Sub-clause	Test Method
4.3	8.25.1	4.14.2	8.3, 8.4.2.1, 8.5, 8.7, 8.8, 8.11, 8.12	4.17.3	8.24.1	5.3	8.4.2.1, 8.25
4.5	8.5, 8.7, 8.11, 8.12	4.15.1.3	8.11, 8.12, 8.21, 8.22	4.17.4	8.24.2	5.4	8.20, 8.36, 8.38, 8.39, 8.40
4.6	8.2, 8.3, 8.4.2.1, 8.5, 8.7, 8.8, 8.14	4.15.1.4	8.23.1	4.18	8.2, 8.3, 8.4.2.1	5.5	8.15
4.7	8.11	4.15.1.5	8.26.1	4.20	8.28	5.6	8.29
4.8	8.12, 8.13	4.15.1.8	8.29	4.21	8.30	5.8	8.16
4.9	8.4.2.3, 8.11, 8.12	4.15.2.4	8.26.2	4.22	8.3, 8.4.2.1, 8.5, 8.6, 8.7, 8.8, 8.32	5.10	8.3, 8.4.2.1, 8.5, 8.6, 8.7, 8.8, 8.9, 8.32
4.10.1	8.18.2, 8.18.3	4.15.3	8.21, 8.23.1	4.23	8.2, 8.3, 8.4.2.1, 8.4.2.2, 8.5, 8.6, 8.7, 8.8, 8.34, 8.35	5.11	8.33
4.10.2	8.5, 8.6, 8.7, 8.11, 8.12	4.15.4	8.21, 8.23.1	4.24	8.37	5.12	8.3, 8.4.2.1, 8.5, 8.6, 8.7, 8.8, 8.9,
4.11	8.2, 8.3, 8.4.2.1, 8.9, 8.17	4.15.5	8.11, 8.12, 8.21, 8.22, 8.26.3, 8.27	4.25	8.2, 8.3, 8.4.2.1, 8.5, 8.7, 8.8, 8.32.1	5.13	8.3, 8.4.2.1, 8.5, 8.7, 8.8, 8.32
4.13	8.19	4.16	8.23.2	5.1	8.2, 8.3, 8.4.2.1, 8.5, 8.7, 8.8, 8.9, 8.11, 8.12		
4.14.1	8.31.1, 8.31.2	4.17.1	8.4.2.3				





LAB NO. : (6614)358-0974  
DATE : January 14, 2015  
PAGE : 9 OF 13

### TEST RESULT

#### II. The flammability requirements of the European Standard "Safety of Toys", EN 71: Part 2: 2011+ A1: 2014.without washing.

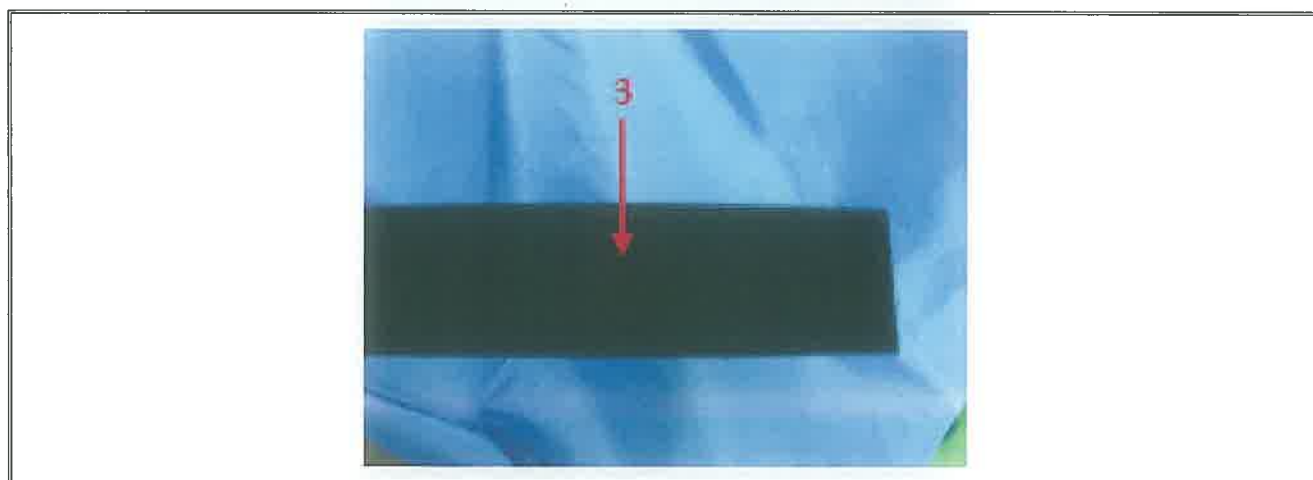
#### **FLAMMABILITY (EN 71 PART 2: 2011 + A1: 2014)**

Subclause	Requirement	Result
4.1	Cellulose nitrate	NP
4.1	Surface flash on a piled surface	N/A
*4.1	Flammable gases	N/A
*4.1	Extremely flammable liquids, highly flammable liquids, flammable liquids and flammable gels	N/A
4.2	Toys to be worn on the head	N/A
4.3	Toy disguise costumes and toys intended to be worn by child in play	N/A
4.3	warning on product and packaging (10 - 30 mm/s)	N/A
4.4	Toys intended to be entered by a child	M
4.4	warning on product and packaging (10 – 30 mm/s)	N/A
4.5	Soft-filled toys	N/A

#### REQUIREMENTS & TEST METHODS CROSS REFERENCE TABLE FOR PART 2

Sub-clause	Test Method	Sub-clause	Test Method	Sub-clause	Test Method	Sub-clause	Test Method
4.2.2	5.2	4.2.4	5.3	4.3	5.4	4.5	5.5
4.2.3	5.3	4.2.5	5.4	4.4	5.4	-	-

**Photo of the Submitted Sample for Chemical Test**



Note: 1) The tested part of the sample was specified by client.  
 2) The test conclusion was given based on the results of tested part.  
 3) The client specifies the test methods and requirements.

**TESTED ITEM**

No.	Test Item
1	Green fabric
2	Blue fabric
3	Black velcro



LAB NO. : (6614)358-0974  
 DATE : January 14, 2015  
 PAGE : 11 OF 13

### TEST RESULT

#### III. Migration of Certain Elements – EN71-3: 2013

Test Method : EN 71-3-2013: Safety of Toys-Migration of certain elements

See Soluble Element (Parameter) and its corresponding Maximum Allowable Limit (Req.) in Result Table	Category I		Dry, brittle, powder-like or pliable toy material			
	Category II		Liquid or sticky toy material			
	Category III		Scraped-off toy material			
-	Unit	Non-German Req.	German Req.	Result		
Test Item(s)	-	-	-	1	2	3
Category	III	III	III	III	III	III
Parameter	-	-	-	-	-	-
Mass of Trace Amount	g	-	-	-	-	-
Boron (B)	mg/kg	15000	15000	<1500	<1500	<1500
Aluminium (Al)	mg/kg	70000	70000	<7000	<7000	<7000
Chromium III (Cr III)	mg/kg	460	460	0.066 <sup>@</sup>	0.046 <sup>@</sup>	0.095 <sup>@</sup>
Chromium VI (Cr VI)	mg/kg	0.2	0.2	0.066 <sup>@</sup>	0.046 <sup>@</sup>	0.095 <sup>@</sup>
Manganese (Mn)	mg/kg	15000	15000	<1500	<1500	<1500
Cobalt (Co)	mg/kg	130	130	<13	<13	<13
Nickel (Ni)	mg/kg	930	930	<93	<93	<93
Copper (Cu)	mg/kg	7700	7700	<770	<770	<770
Zinc (Zn)	mg/kg	46000	46000	<4600	<4600	<4600
Arsenic (As)	mg/kg	47	47	<4.7	<4.7	<4.7
Selenium (Se)	mg/kg	460	460	<46	<46	<46
Strontium (Sr)	mg/kg	56000	56000	<5600	<5600	<5600
Cadmium (Cd)	mg/kg	17	17	<1.7	<1.7	<1.7
Tin (Sn)	mg/kg	180000	180000	<18000	<18000	<18000
Organic tin	mg/kg	12	12	<12*	<12*	<12*
Antimony (Sb)	mg/kg	560	560	<56	<56	<56
Barium (Ba)	mg/kg	18750	18750	<1875	<1875	<1875
Mercury (Hg)	mg/kg	94	94	<9.4	<9.4	<9.4
Lead (Pb)	mg/kg	160	90	17.4	<4.7	<4.7
Conclusion	-	-	-	PASS	PASS	PASS

Note / Key :

ND = Not detected

">" = Greater than

Req. = Requirement

NR = Not requested

g = gram(s)

mg/kg = milligram(s) per kilogram = ppm = part(s) per million

Remark :

- Results of Cr III and Cr VI were reported as sum of soluble Chromium content.
- Result(s) of organic tin was (were) reported as soluble tin content.
- @ = The result is reported as Chromium content

\*The report limit of OT is reported by soluble tin screening.

Comment :

Proposals to amendment of European Parliament and Council Directive 2009/48/EC, Annex II, Part III, Point 13 :			
-	Category I	Category II	Category III
Element(s)	Lead (Pb)	Lead (Pb)	Lead (Pb)
Current	13.5 mg/kg	3.4 mg/kg	160 mg/kg
Proposed	4 mg/kg	1 mg/kg	47 mg/kg



LAB NO. : (6614)358-0974  
DATE : January 14, 2015  
PAGE : 12 OF 13

### TEST RESULT

#### IV. Total Cadmium Content – Regulation (EC) No. 1907/2006 Annex XVII Item No. 23

Parameter	Unit	Result			Maximum Allowable Limit
		1	2	3	
Total Cadmium (Cd)	mg/kg	< 10	< 10	< 10	100
Conclusion	-	PASS	PASS	PASS	-

Note:

1. mg/kg = milligram per kilogram
2. "<" = Less than

Method:

1. Plastic - EN 1122: 2001, Method B
2. Paint - Sample was digested with nitric acid, then the cadmium content was analyzed by Atomic Absorption Spectrophotometer.

#### V. Phthalate Test

Test Method: Extraction with solvent, analysed by Gas Chromatography Mass Spectrometer.

Parameter	CAS No.	Unit	MDL	Result		
				1	2	3
Dibutyl phthalate (DBP)	84-74-2	%	0.005	ND	ND	ND
Butyl benzyl phthalate (BBP)	85-68-7	%	0.005	ND	ND	ND
Di-2-ethylhexyl phthalate (DEHP)	117-81-7	%	0.005	ND	ND	ND
Di-n-octyl phthalate (DNOP)	117-84-0	%	0.005	ND	ND	ND
Di-iso-decyl phthalate (DIDP)	26761-40-0	%	0.005	ND	ND	ND
Di-iso-nonyl phthalate (DINP)	28553-12-0	%	0.005	ND	ND	ND

Note: mg/kg= milligram per kilogram  
% = percentage  
1 mg/kg = 0.0001%  
MDL = Method Detection Limit  
ND = Not Detected (< MDL)  
“-“ = Not Regulated



LAB NO. : (6614)358-0974  
DATE : January 14, 2015  
PAGE : 13 OF 13

### TEST RESULT

#### VI. Solar UV Protective Properties – Reference to EN 13758-1:2001+A1:2006

Parameter	Unit	1	2
UPF (Ultraviolet protection factor)	-	122.802	104.569
mean UV-A Transmittance (315 <sub>nm</sub> – 400 <sub>nm</sub> )	%	5.209	7.486
mean UV-B Transmittance (290 <sub>nm</sub> – 315 <sub>nm</sub> )	%	0.186	0.207
UPF rating	-	>50	>50
Number of samples tested	-	8	8
Standard Deviation	-	2.427	1.396

Note: nm = nanometer  
( ) = standard deviation (S.D.) of replicate test

Method: EN 13758-1:2001+A1:2006.

Remark: 1) When the UPF is greater than 50, only UPF “>50” to be reported.  
2) Report lowest UPF measured of a particular specimen.

#### VII. Water Penetration: Hydrostatic Pressure Test

(BS EN ISO811, RATE OF INCREASE WATER PRESSURE 60mBar/Min)

Test Item 1						
	1st	2nd	3rd	4th	5th	AVG.
HYDROSTATIC PRESSURE (mBar)	68.8	68.0	77.0	69.8	71.8	71.1

Test Item 2						
	1st	2nd	3rd	4th	5th	AVG.
HYDROSTATIC PRESSURE (mBar)	73.1	64.8	76.1	75.0	69.4	71.7

END